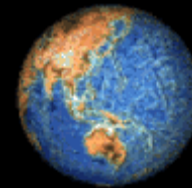


KOLEKSI & PRESERVASI SERANGGA



SUPUTA
JURUSAN HPT
FAKULTAS PERTANIAN UGM
puta@ugm.ac.id

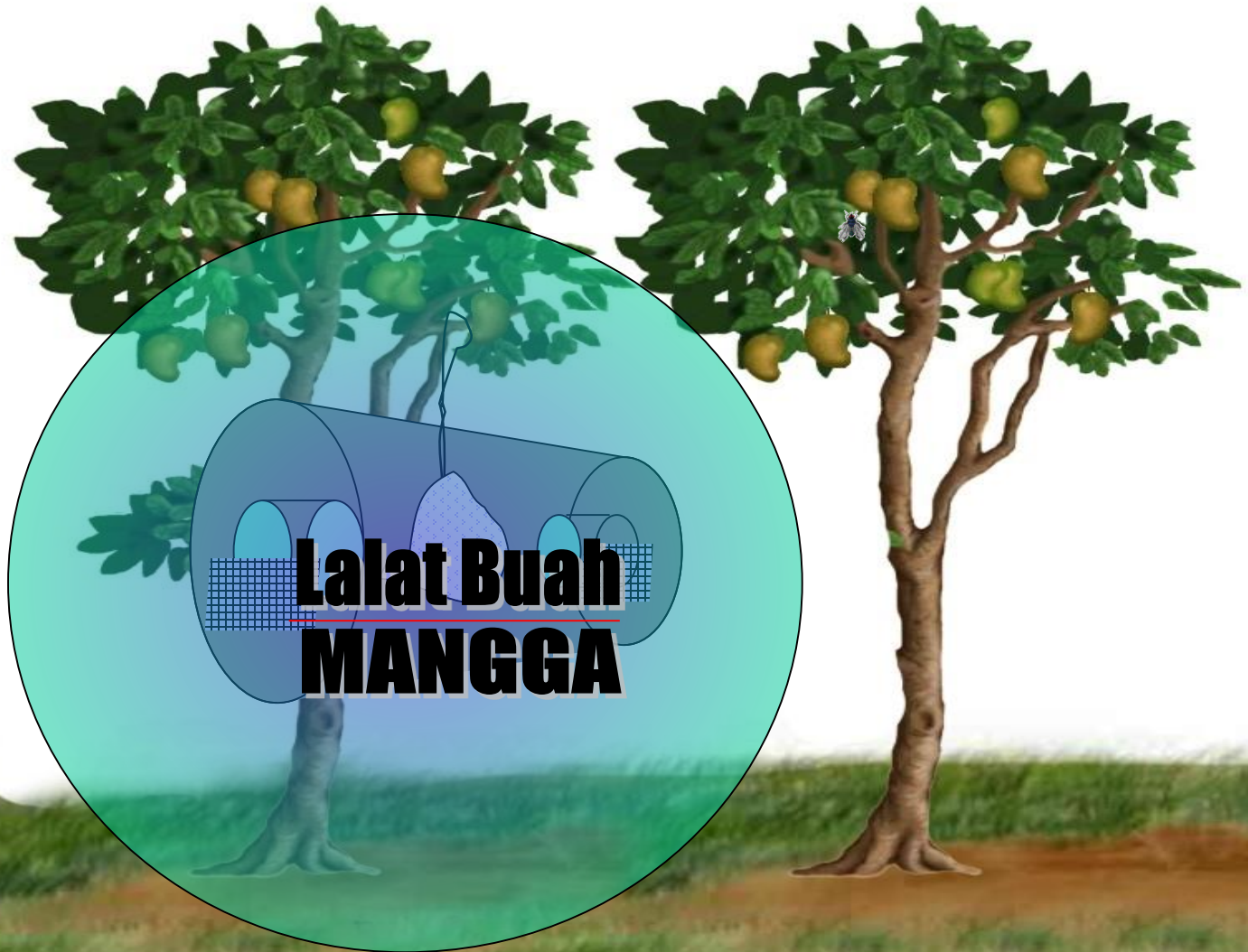
KOLEKSI SERANGGA

Tujuan Koleksi

- Surveilans
- Hobi

TRAPPING

METHYL EUGENOL

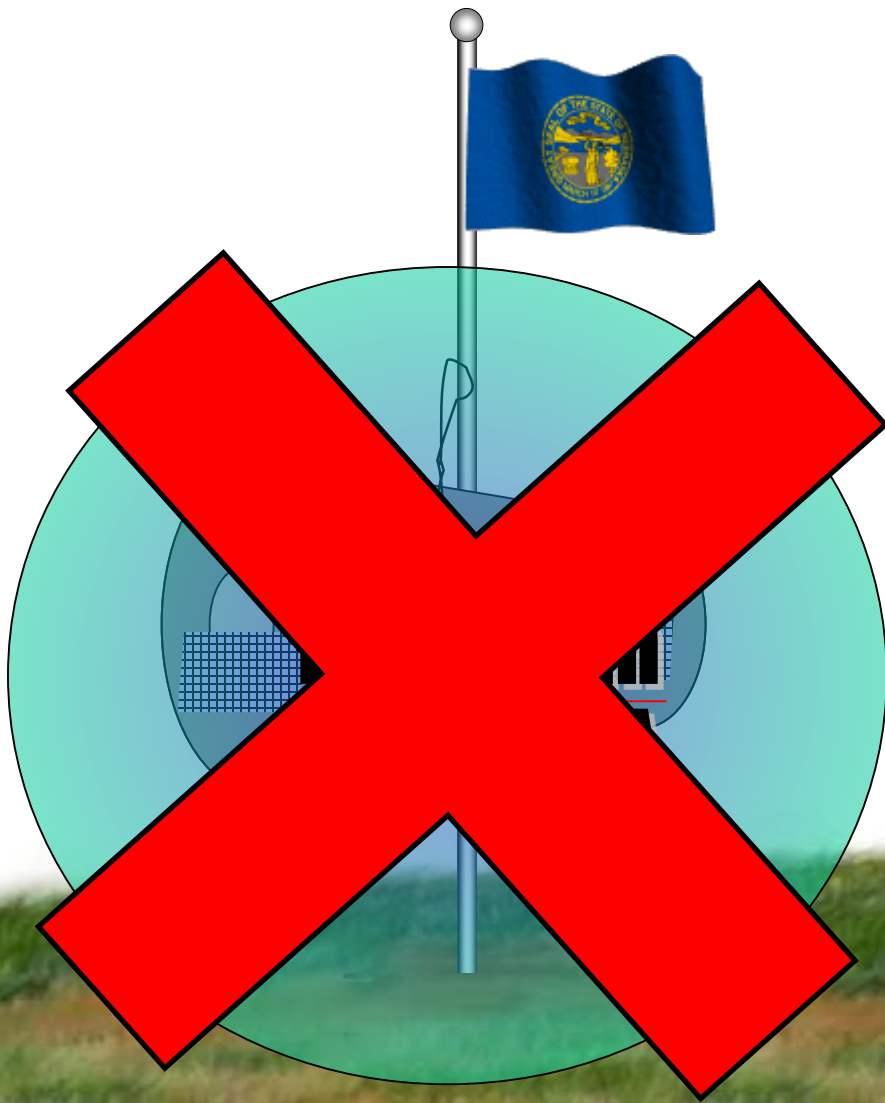


Lalat Buah

MANGGA

TRAPPING

METHYL EUGENOL



TRAPPING METHYL EUGENOL

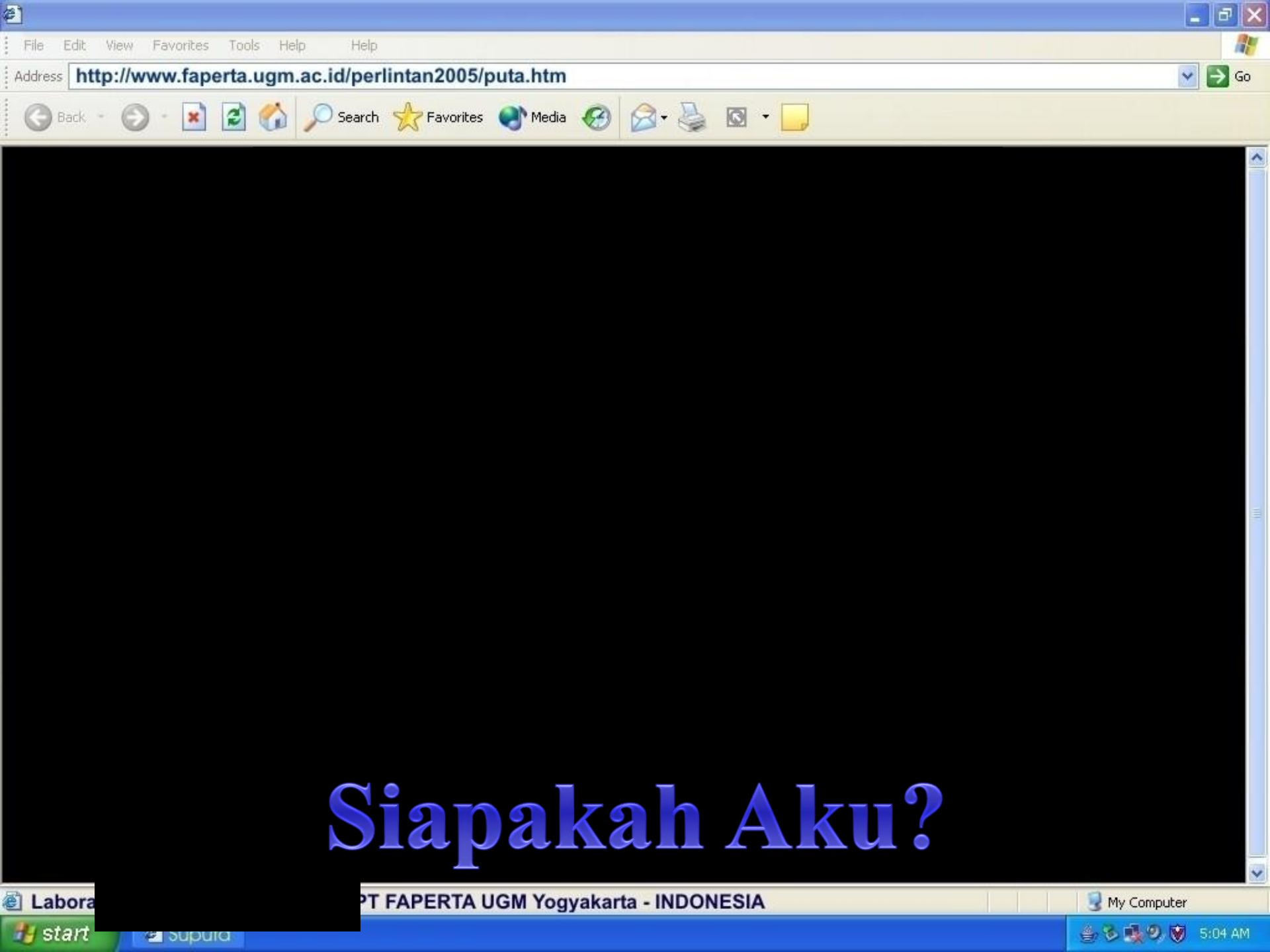


Host Rearing



KOLEKSI SERANGGA





Siapakah Aku?

KOLEKSI SERANGGA

Tujuan Koleksi

- Surveilans
- Hobi

Perilaku Serangga

KOLEKSI SERANGGA



KOLEKSI SERANGGA

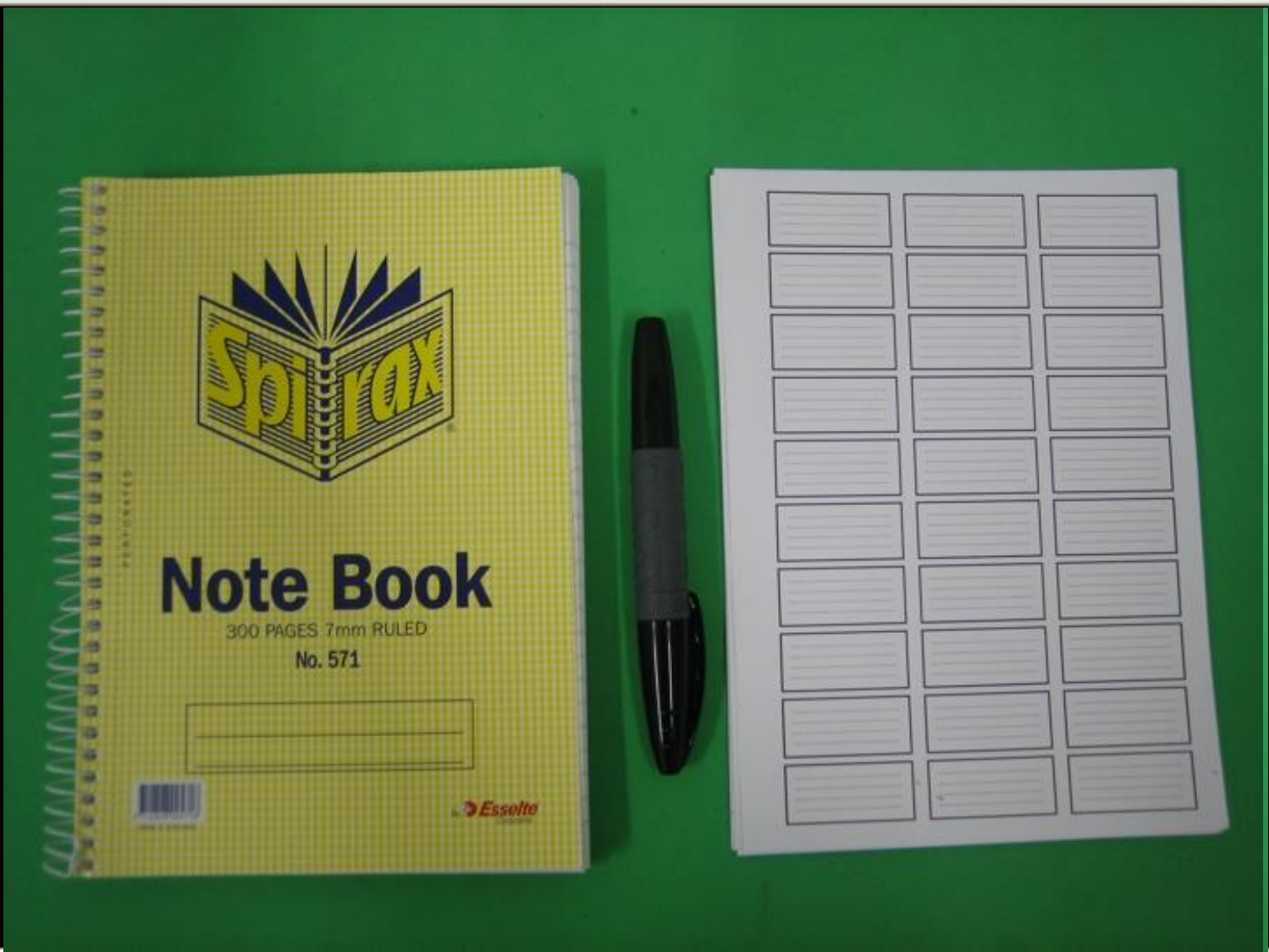
Tujuan Koleksi

- Surveilans
- Hobi

Perilaku Serangga

Penentuan Cara Koleksi

- Alat dan Bahan





Hand collection untuk serangga darat
Lokasi: MARDI - Malaysia



Perangkap sugar bait untuk food attractant pada semut
Lokasi: Kebun penelitian Kalitirto - Yogyakarta







©Wayne Wurtsbaugh











Malaise trap
Lokasi: BPTPH Pandak di Bantul - Yogyakarta



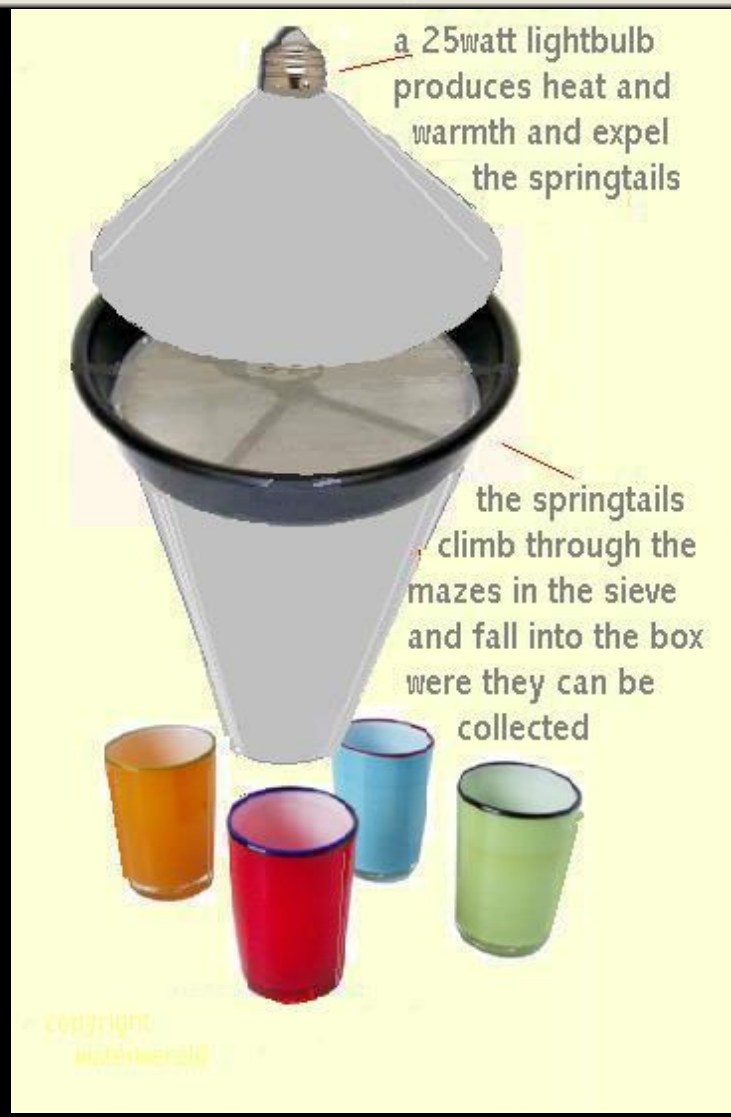












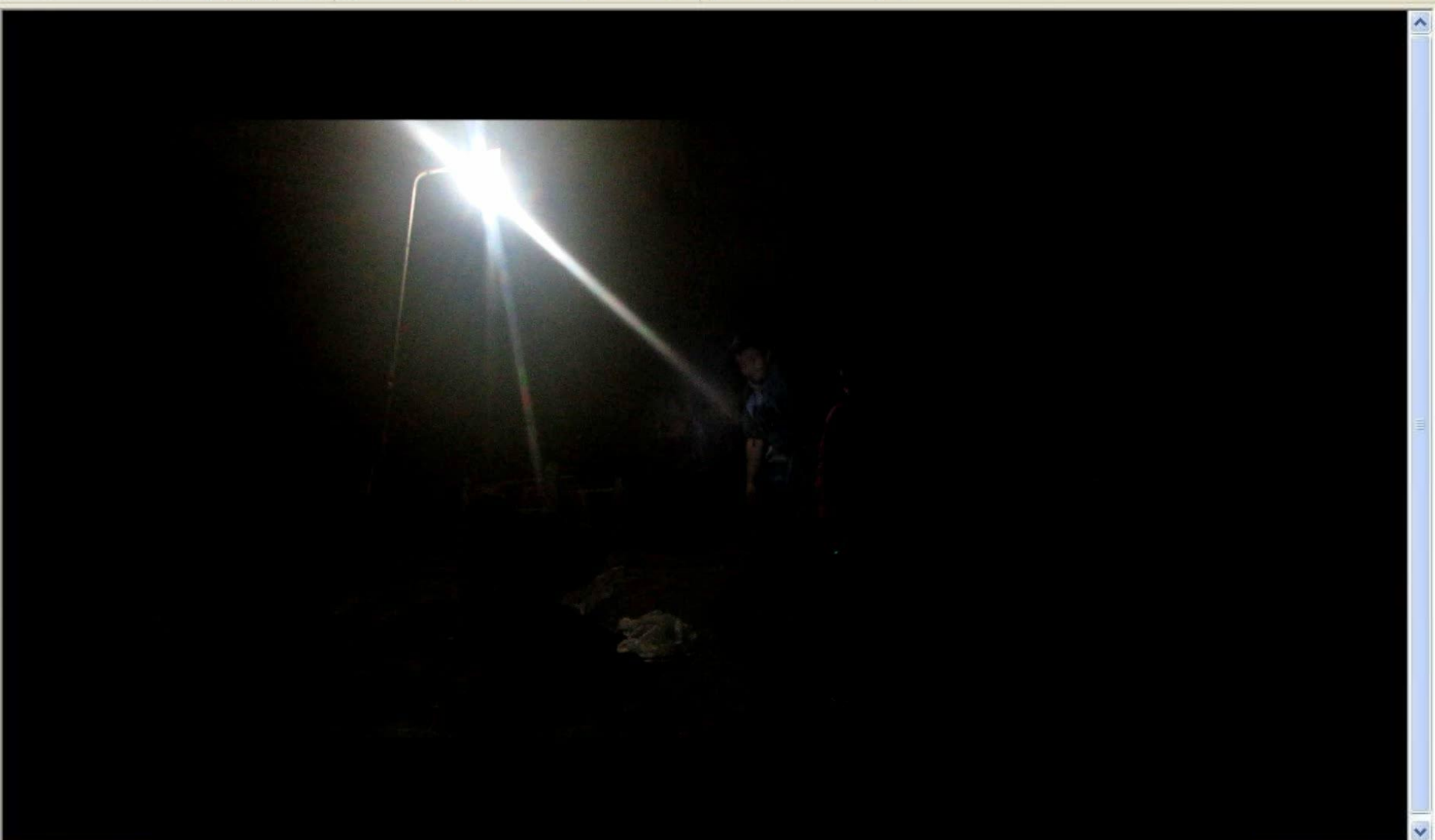




File Edit View Favorites Tools Help Help

Address <http://www.faperta.ugm.ac.id/perlintan2005/puta.htm> Go

Back Forward Stop Refresh Home Search Favorites Media Print Mail



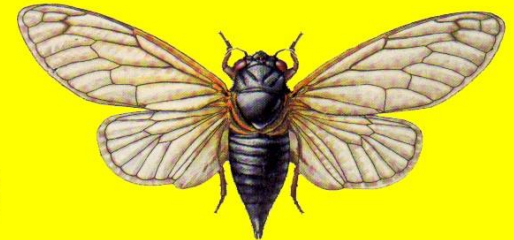
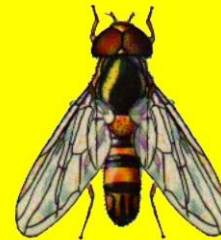
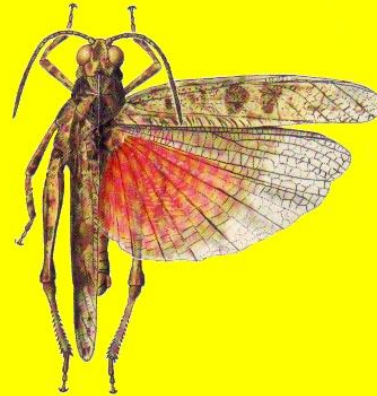
Laboratorium Entomologi Dasar HPT FAPERTA UGM Yogyakarta - INDONESIA

My Computer

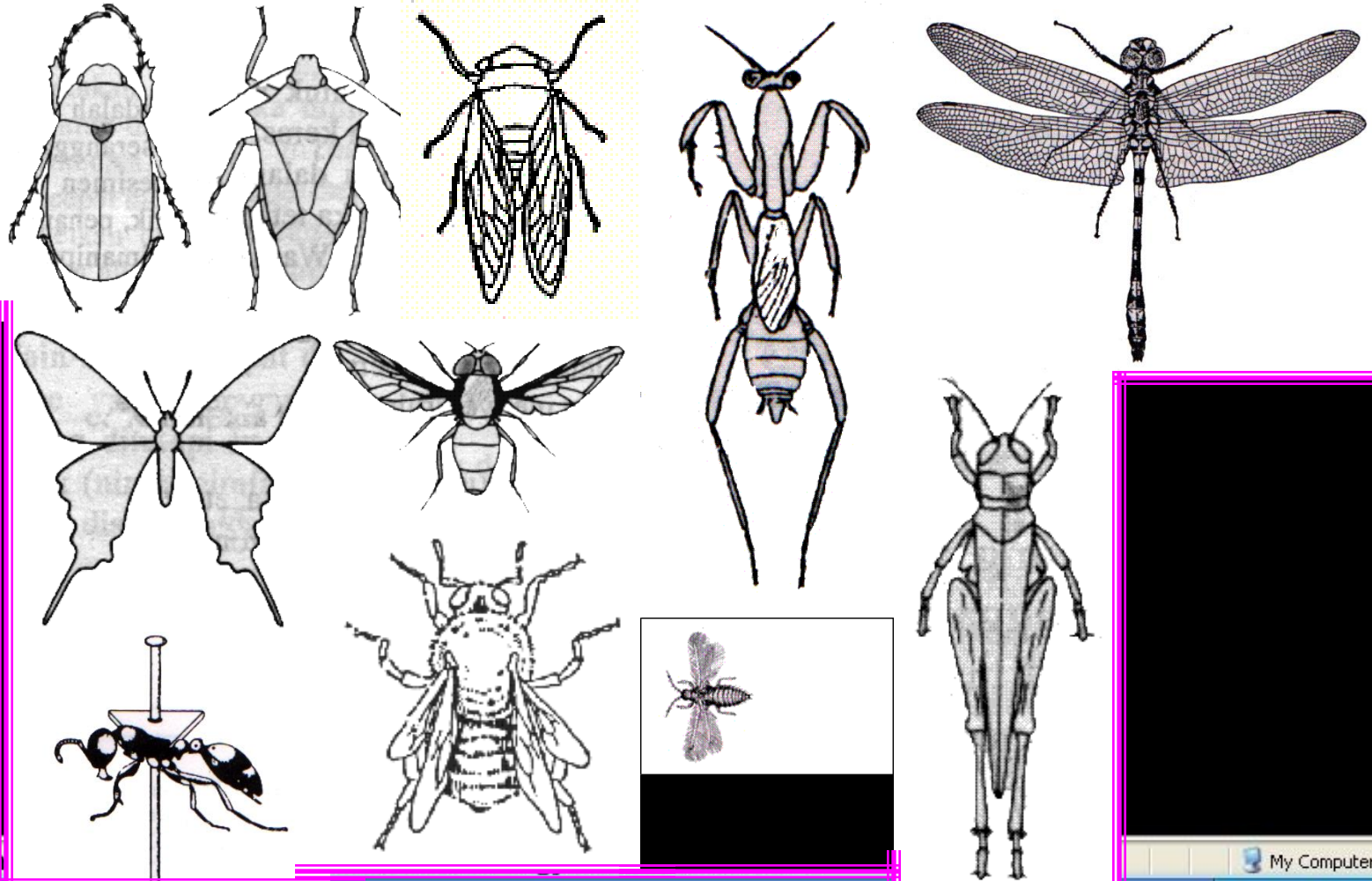
start Suputa

5:04 AM

PRESERVASI SERANGGA



Penusukan Jarum pada Tubuh Serangga



Kegunaan Hasil Trapping

1. Biodiversitas
2. Hobi (kolektor serangga)
3. Specimen Voucher → ISPM → WTO
4. Penentuan Cara Pengendalian Hama

Scientifically Proven,
Safe for Kids,
Award Winning

[LEARN MORE >>](#)

RANDOM

WHAT IS THE
MOST EXPENSIVE
YACHT?

This expensive beetle is the stag beetle and the chance that you'll run across one is slim. It's only one of the 1,200 types of beetles there are! The stag beetle looks pretty menacing as it has mandibles that are shaped much like claws and can look pretty ferocious, even for an insect! However, the mandibles are generally perfectly harmless to human beings and are only used against other stag beetles when males want to mate with the same female.

These beetles are usually approximately 2 inches in length and they are quite rare however, they don't all cost as much as the most expensive insect. That title belongs to one stag beetle in particular - one that measured just over 3 inches and was hand-delivered to an insect shop by the breeder in Japan.

And just how much would you pay for a mean-looking beetle? Well, if you're as interested in insects as this insect shop owner is, you'd willingly hand over 10 million yen, which is about \$89,000 USD!



The Stag Beetle

- Audio and Video
- Software Tools
- Driven by Curiosity
- Old Car Manuals
- Arts & Crafts Style
- Arcade Force Game Directory
- Multimedia Directory
- Sound Recorder
- Funny Jokes
- Interesting Facts



Trapping

- **Perangkap Steiner**

(ME Lure atau CUE Lure)

- **Label**

Lokasi

(hutan, pemukiman, areal pertanian)

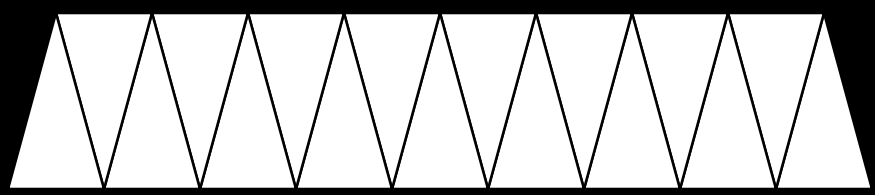
Penetapan Kode

- G (Indonesia),
- No.urut (SulSel=15, NTB=28),
- Huruf alfabet a s/d z (Lokasi),
- Vegetasi tumbuhan berbuah disekitar perangkap
- ME Lure atau CUE Lure (Jenis Atraktan yang dipakai)
- Lintang Utara dan Selatan
- Ketinggian tempat (dpl)

SEBAGIAN DIMASUKKAN KEDALAM ETANOL MURNI DISIMPAN PADA SUHU -80 oC SELANJUTNYA DIEKSTRAK DNA NYA

PRESERVASI

Kertas Karding



8 m m

4 m m

PRESERVASI

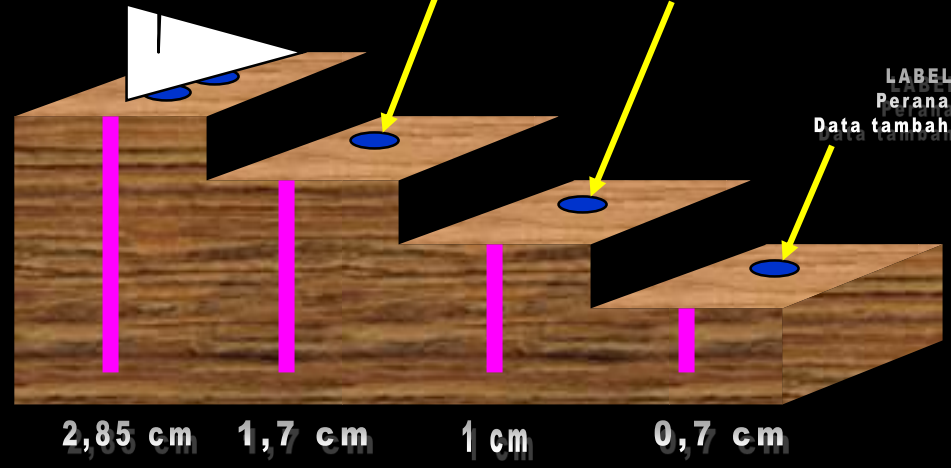
Insect Pine No. 3

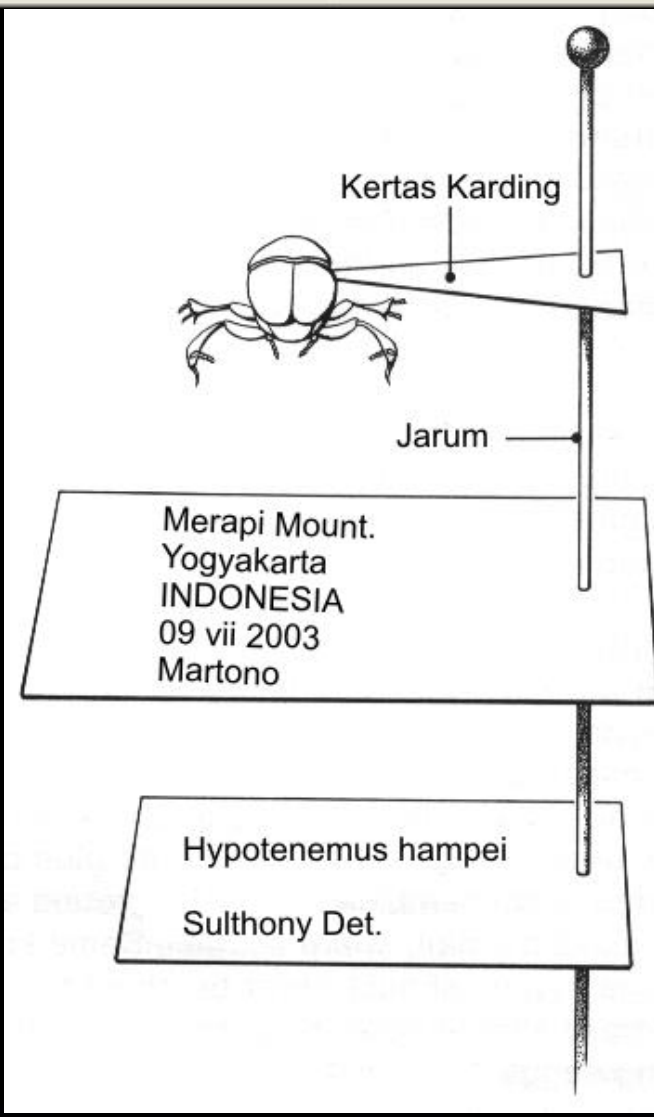


LABEL
Nama lokasi
Tanggal koleksi
Nama kolektor

LABEL
Nama spesies
Inang/Atraktan
Nama pendeterminasi

LABEL
Peranan
Data tambahan lain





Penyiapan dan Pengiriman Sampel

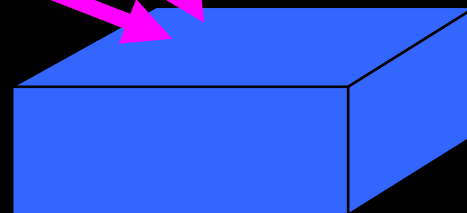
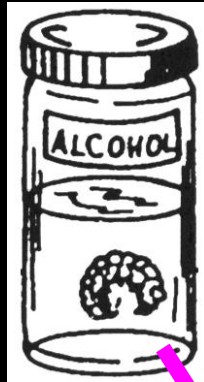
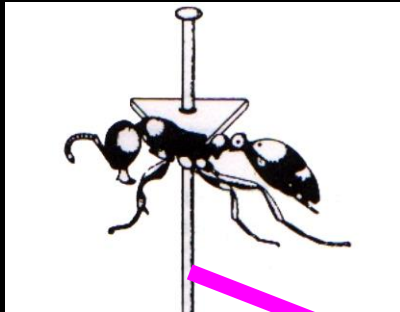
untuk

Identifikasi

- Spesimen
- Jarum
- Serangga
- Kertas
- Karding
- Pinning Block
- Alkohol 80%
- Label
- Kertas Keterangan
- Sterofoam
- Kardus

• Botol koleksi

BOX SPESIMEN



13 cm x 9 cm x 5 cm

**Spesimen harus sudah diawetkan
(koleksi basah/kering) plus data sebagai**

berikut:

- **Nama Pengirim**
- **Tanggal Pengiriman**
- **Alamat Pengirim**
- **Alasan Pengiriman Spesimen**
- **Ket: Apakah spesimen dikehendaki untuk dikembalikan setelah diidentifikasi atau tidak**

ALAMAT PENERIMA JASA IDENTIFIKASI SERANGGA

Mr. John Maxen
Insect/Mite Identification Services,
CABI BIOSCIENCE UK Center (Egham),
Bakeham Lane, Egham,
Surrey TW20 9 TY,
United Kingdom